



International Brotherhood of Electrical Workers Local 234

IBEW Local 234

Newsletter

March 2011

Local 234 Officers:

Ken Scherpinski
**Business Manager/
Financial Secretary**

Andy Hartmann
President

Chris Kiner
Vice President

Mike Ihnot
Treasurer

Stephen Slovacek
**Recording Secretary/
Registrar**

Anthony Davis
Andy Gattis
Rick Keaton
Richard Smith
Executive Board

**The Electrical Workers Union for Monterey,
San Benito, and Santa Cruz County**

Business Manager's Report by Ken Scherpinski

Greetings Brothers and Sisters,

The winter weather seems to be lingering on as March brings us toward spring. I keep looking for projects to start up and get our

membership back rocking and rolling.

I would like to touch on some safety items for you to think about not only for on the job but also for your home projects. Falls are the leading cause of workplace death in construction. In general, fall protection is required when workers are around edges, openings, or steeply sloped surfaces that could lead to a fall of more than 7 ½ feet. The main causes of fall fatalities are unprotected sides and edges, roof and wall openings, floor holes, improper scaffold construction, improper use of portable ladders, falls from girders and structural steel, and unguarded protruding steel rebar. A person who weighs 200 lbs. and falls 6 feet, will hit the ground with almost 10,000 lbs. of force.

Where possible, it is best to eliminate the need for fall protection by installing guard rails, barriers, covers or scaffolding. Fall protection equipment should be inspected before each use for wear or damage. Many of us take simple ladder usage for granted. Each year, about 65 construction workers are killed by falls from ladders. Most deaths happen from 10 feet or lower. Twice as many falls occur when stepping down ladders than when going up ladders. The main cause of falls from straight and extension ladders is the ladder sliding off its base. We don't want to work on the top or cap of a slip ladder.

Position the portable ladder so the side rails extend at least 3 feet above the landing and make sure that the weight on the ladder will not cause it to slip off its support. For safe use at home or work, make sure the ladder is on a firm level surface, always face the ladder when going up and down, maintain three-point contact at all times, secure the ladder at top and bottom, and never over-reach to get at something off to one side. Rule of thumb, set up extension ladder at an angle where you put your feet at the base, reach your arms out fully extended and grip the rungs. Never use an A-frame ladder in the closed position leaning up against the work area. It only takes a small amount of time to ensure your safety. Not taking that time could result in catastrophic consequences.

The Executive Board has adopted a policy for donation requests. In order to keep up with the requests for donations, all donations will first go before the Executive Board for a recommendation to the General Body. For future requests by members, you will need to send in a formal request for consideration. The Executive Board meets on the 4th Wednesday of each month.

March 17th is St. Patrick's Day. There are 36.5 million U.S. residents who claim Irish ancestry. This number represents almost 9 times the population of Ireland itself (about 4 million). The first St. Patrick's Day parade took place in New York City March 17, 1762. Dublin, Ca., namesake of Ireland's capitol, boasts the most popular of U.S. cities with a population of about 40 thousand of Irish descent.

Have a great month of March.



IBEW Founders' Scholarship

The IBEW Founders' Scholarship honors the dedicated wiremen and linemen who organized the International Brotherhood of Electrical Workers. Each year the officers of the IBEW are pleased to offer its working members scholarships on a competitive basis. It is hoped that the awards will not only contribute to the personal development of our members but also steward the electrical industry that our founders envisioned. An application for the IBEW Founders' Scholarship is available at your local union hall and is also available on the IBEW website (www.ibew.org). In an effort to make the IBEW Founders' Scholarship as inclusive as possible, we no longer require applicants to take the SAT or ACT to be eligible.

All IBEW members who have been in continuous good standing for four years preceding May 1 of the scholarship year in which they plan to apply are eligible for the IBEW Founders' Scholarship. Please note, if a member has been on honorary withdrawal at any time during the aforementioned period, he/she will not be eligible to participate.

Spouses or children of IBEW members are not eligible for the IBEW Founders' Scholarship. Union Plus has a scholarship that is available for IBEW members, as well as their spouses and dependent children. Please visit the Union Plus website (www.unionplus.org) for more information about other scholarship opportunities.

We encourage all interested eligible members to participate in the IBEW Founders' Scholarship Program.



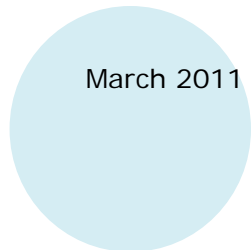
Are you prepared for an Emergency?

Was that an earthquake? That is probably the first thing that crosses our mind at the slightest shake or rumble. Our most recent earthquake on March 3rd at a magnitude of 3.5 should remind us that we all need to be prepared. Earthquakes strike suddenly, violently and without warning. Identifying potential hazards ahead of time and advance planning can reduce the dangers of serious injury or loss of life from an earthquake. There are many ways to plan ahead. Check for hazards around your home by repairing defective electrical wiring and leaky gas connections, hang heavy items such as pictures and mirrors away from beds, couches or anywhere people sit, and store weed killers, pesticides, and flammable products securely in closed cabinets with latches and on bottom shelves. Identify safe places indoors and outdoors, such as against an inside wall and away from where glass can shatter around windows, mirrors, pictures or where heavy bookcases or other heavy furniture could fall over. Also, have an emergency communication plan in case family members are separated from one another during an earthquake (a real possibility during the day when adults are at work and children are at school), develop a plan to reunite after the disaster. For more details please visit http://www.fema.gov/hazard/earthquake/eq_before.shtm



Here are a few disaster supplies you should always have on hand:

- Flashlight and extra batteries.
- Portable battery-operated radio and extra batteries.
- First aid kit and manual.
- Emergency food and water.
- Nonelectric can opener.
- Essential medicines.
- Cash and credit cards.
- Sturdy shoes.



March 2011

President Barack Obama told Congress in his State of the Union speech that **"no workers are more productive than ours ... we know what it takes to compete for the jobs and industries of our time."**

And no workplace better reflects America's commitment to excellence than the Philips Luminaires plant in the little town of Sparta, Tenn. The 40-year-old lighting fixture plant has won numerous awards, being **named one of North America's 10 best plants in 2009** by Industry Week magazine. It even won Philips' own "lean" manufacturing award last fall.

And this summer, it will begin production of energy-efficient LED light fixtures, which are in increasing demand as incandescent bulbs are phased out.

But now the Netherlands-based Philips has pulled the plug on Sparta, announcing last November that it was **shutting the plant down and moving most of the work to Mexico by next year.**

To Mexico? Why? Philips has not given a reason. **Perhaps CEO Gerard Kleisterlee** thinks that in the midst of record unemployment we won't care about one more plant shutdown. That we won't notice more good manufacturing jobs being outsourced to China or Mexico; **that we don't know that Philips' profits are up.**

But he's wrong - community and small business leaders, elected officials and union activists are standing together to **tell Philips: Keep the Lights On in Sparta - Save American Jobs.**

And they want you to join them.

Tell the CEO of Philips: We need good jobs here in America. No more outsourcing. Enough is enough.

The ripple effect from this closure goes beyond Sparta. If Philips can get away with outsourcing good jobs from an award-winning plant, no worker's job is safe.

Sign the electronic petition to Philips today at http://action.ibew.org/c/543/p/dia/action/public/?action_KEY=1550

We'll deliver it, with your name, to CEO Kleisterlee himself.

Join us on Facebook and recruit your friends, family and co-workers.



JATC Training News

By Ed Sudyka

Joint Apprenticeship and Training Center

Ed Sudyka, Training Director
Debra Frame, Admin. Asst.
831.633.3063 office
831.633.3068 fax
trainingibew234@sbcglobal.net

The Electrical Workers Union for Monterey, San Benito, and Santa Cruz County

UPCOMING CLASSES AT THE TRAINING CENTER, CASTROVILLE

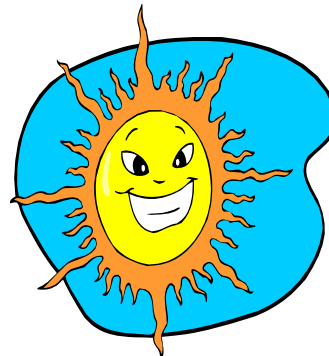
CPR Certificate Renewal class will be held over the course of two evenings (not one Saturday) on Monday, March 7 and Thursday, March 10 starting at 6 p.m. You must be at both classes to get your recertification. Space is limited, so call today to reserve your spot! 633-3063



Wednesday, March 16, at 5:30 p.m., Southwire / Maxis will be pulling into our parking lot with a 16 foot trailer loaded with pulling gear and tools. They'll be here to demonstrate their products and showing us how to 'git 'er done! Plan on attending this hands-on informative evening, and get yourself a couple more CE hours for your State Certification renewal! Call to let us know you'll be here... 633-3063

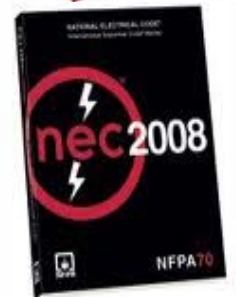
IBEW California Solar Certification Class!

Mark your calendars and be here on **Tuesday evening, March 8 at 5:00 p.m.** If you don't already have a Study Guide for this class, call us and we'll get one sent to you. There will be a Cert. Test at the end of the presentation for all of you who went through a L.A. 11 Solar Weekend but haven't been certified yet!



2008 Significant Changes Class

Significant Changes to the 2008 National Electric Code, that is! We're bringing back our Code Maestro David Martinez to lead us through the myriad of changes that impact the work we perform. Remember, the NEC is a "living document"; if you learned the 1996 NEC, you need to take an NEC Upgrade class! Call today to sign up, class will begin in April 2011. 633-3063.



Advanced Lighting Controls

CALCTP (California Advanced Lighting Controls Training Program) The next CALCTP training session is scheduled to begin at 5:30 p.m. on Tuesday, April 5 here in Castroville. **Only 7 openings remain** in this April session, so hurry in and reserve your spot by completing your prerequisite online coursework found at <http://bit.ly/IBEW234CALCTP>. When you're done, bring us your "transcript" printout to secure your spot in the class. The CALCTP class includes 10 hours of lecture and 40 hours of hands-on lab.

WANTED: DUMMY TO MODEL Arc Flash Protection! Through a generous donation from Salisbury, a Honeywell Safety Products Company, our training center has been gifted with an arc-flash hood and coveralls and other safety gear. We'd like to display these safety items by dressing up a mannequin. If you have one to spare, consider donating it to the Training Center, please! **THANKS, SALISBURY!**



WHEN IS IT PERMISSIBLE TO USE A GREEN INSULATED CONDUCTOR FOR OTHER THAN EQUIPMENT GROUNDING PURPOSES? Now, if you'd already taken that 2008 NEC Significant Changes class, you'd know this answer! In the 2008 NEC, the one exception (and it is a new exception!) to 250.119 "Identification of Equipment Grounding Conductors" says that "Power limited, Class 2 or Class 3 circuit cables containing only circuits operating at less than 50 volts shall be permitted to use a conductor with green insulation for other than equipment grounding purposes."
Now you know!

Continuing Education for Certification Renewal... how do you get 32 hours?

This is a question I'd like each of you to answer for me! Should this training center gear up to provide classes to a large number of JW's this year whose electrical certification will need to be renewed in 2012 (going on a 3 year cycle from the first year, 2006, when electrical certification went into effect)? Or, are a lot of you JW's out there going "online" for your continuing education requirements, or going down to your local Community College and taking a "relevant" course?

If you know that you'll want to come here to Castroville and take 32 hours (or more!) of class work in order to renew your certification, can you please call me up and let me know which classes you'd like to take, and how soon? That way, I can coordinate the scheduling.

And... if you feel you need to stay home and do it online, you may want to point your webbrowser to:

<http://www.njatc.org/training/online.aspx>

Thanks! Ed Sudyka, Training Director 633-3063

In the works: upcoming one-evening presentations here at the Training Center:

Harger UltraShot: a training session on proper use of the Harger exothermic welding system for grounding and bonding, similar to using "Cadweld".

Snake-Tray: Cable tray installation procedures and principles by a manufacturer of this product.

Transfer Switches: Terry Currence will be back, this time teaching us about Transfer \$'s!

Reference Library →

Yes, we've got one! If you're looking for information on an electrical subject, we may have the book for you! Come on in and "check it out"!



Our Condolences

Brother George Vargas passed away January 28, 2011. He was a member for over 50 years. There will be services held at a later date.

Go Green with Our e-Edition!

Sign up today to receive this newsletter as a PDF email attachment. Go Green! Help us reduce our production costs and be "green" at the same time. Our webpage is located at www.ibew234.org. There is a link under **Downloads, Newsletter** to the subscribe form.

Also, if you would like to receive by email your **birthday card or a notice that your dues are late**, let us know by calling the Hall at 633-2311 and talking with either Mira or Sallie.

Manage Your Finances

Get the help of a Financial Representative

Wednesday, March 9th, 3-6pm

James Boisse, a Financial Representative with Principal Financial Group, will be at the Hall to provide financial assistance. Contact him if you would like to set up an appointment; however, no appointment is necessary.

James Boisse

Development Director

(408) 437-7245

boisse.james@principal.com

www.principal.com/centralcalifornia



Call Toll-Free
(800) 654-1485

Happy March Birthdays!



Lyle Abraham Jr.
Stanley Arnbrister
William F. Beauchamp
Mark Breeding
Christopher Burditt
Patrick J. Cotter
James H. Crabtree
Anthony D. Davis
Willie Dietz
Juan Dominguez
Erik Dybdahl
Robert F. Earl

Peggy Evans
Bryce Fuller
Leonard C. Gentry
Charles M. Gillis
Heath R. Guaracha
Kyle J. Hirayama
Michael C. Holcroft
Saichi Kimoto
Tony Lazaro
Florentin Lozano
Paul R. Mahler
Michael Martinez

Mark Maschmeyer
James H. Myers
Juan A. Rodriguez
Ronald A. Rodriguez
Mark D. Rosas
Hermilo Ruiz
Ken Scherpinski
Aaron J. Selbicky
Marvin L. Swaithe
Mario C. Thomas
Manuel G. Valdez

This Month's Local 234 Winners!

Here are the winners from the **FEBRUARY** union meeting:

C.O.P.E. (Committee on Political Education):

Stefan Marceron won \$16 and donated it back.

Apprentice Give-Away:

Raymond Sykes II won \$23.40.



Give-Away Winners:

Ray Sykes won IBEW patch and donated it to Wayne Huston

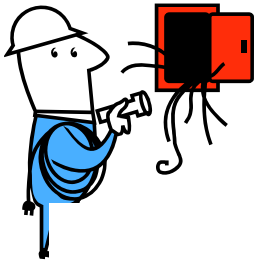
Chris Kiner won a T-shirt donated by member

Mike Ihnot-No Dog level and donated it back

Quote of the Month

The Best Way to predict the future is to invent it.

-Alan Kay



The next general membership meeting will be:

Wednesday, March 9, 2011

@ 6:30 pm

March 2011

Sun	Mon	Tue	Wed	Thu	Fri	Sat
		1	2	3	4	5
6	7	8	9 Union Meeting @ 6:30pm	10	11	12
13 Daylight Savings Time Begins	14	15 JATC @ 5pm	16	17 St. Patrick's Day	18	19
20	21	22	23 Executive Board @ 6pm	24	25	26
27 End of pay period	28	29	30	31		

Monthly Benefit Statements

Benesys Administrators provides every member with monthly benefit statements (right) to help keep you informed of your banked hours for Health and Welfare coverage. We have members reporting they are not receiving these. If you are not, we may need to verify your mailing address. If your address has changed, please notify the union as soon as possible to avoid any delay in mail. If you have any questions or concerns you may also call Benesys Administrators at 1-877-885-3753 ext. 8414 and speak with Ashley Alves.

HOW TO READ YOUR MONTHLY BENEFIT STATEMENT

IBEW LOCAL 234 HEALTH & WELFARE PLAN
MONTHLY BENEFIT STATEMENT

Participant Name: JAMES SMITH
Participant ID: 1234567890
September 2008

IBEW Local 234 Benefit Office
P.O. Box 678
San Jose, CA 95108
Phone: (408) 438-3753 or
Toll Free: (877) 885-3753

Health & Welfare Status
You are eligible for coverage for September 2008.

1. \$48.00: Prorated Hour Bank (including hours restricted time)
1,100.00: Credited Hours for July 2008 work month
120.00: Hours used for vacation eligibility for September 2008
0000.00: Current Hour Bank

2. Coverage in: PMA, Delta Dental, Sun-Ra, Family Coverage

3. County of Residence: Santa Clara

4. City: San Jose

5. School Certification valid through 10/1/08

Credited Contributions Received On Your Behalf

EMPLOYER	WORK MONTH	DEBIT RECEIVED	WORK HOURS	HEALTH CARE DEDUCT	WEP	UNEMPLOYMENT INSURANCE	OTHER DED
A.B.C. Inc.	01/08	100.00	120.00	100.00	1,000.00	1,000.00	100.00

1. Name of Participant, Participant ID (assigned by the Benefit Office), and the date of the Monthly Benefit Statement.
 2. Month you are eligible for coverage.
 3. Participant's current coverage enrollment.
 4. This area lists those enrolled under your coverage and their birth dates. Contact the Benefit Office if any information is incorrect or missing. It is important to keep this information accurate to avoid breaks in coverage.
 5. Dependents over age 19 must be full-time students to be covered. This area will show the date your student certification is valid through.
 6. The hours reported by your employer are listed here. Expect a two month delay between when you work and when the hours appear on the Benefit Statement. For example, work you perform in July is reported in August and should be on your September Status Report for September eligibility. Contact the Benefit Office if you worked for an employer that is not listed or the information is incorrect.
- Please look on the reverse side of the Monthly Status Report for notices and other important information.
- You may also access information regarding your coverage under the Plan by visiting
- WWW.IBEW234BENEFITS.ORG



International Brotherhood of Electrical Workers Local 234



NONPROFIT ORGANIZATION
IBEW LOCAL 234
U.S. POSTAGE PAID
CASTROVILLE, CA
PERMIT NO. 410

IBEW Local 234
10300 Merritt Street
Castroville, CA 95012

(800) 499-4239
(831) 633-2311
(831) 373-1411
(831) 633-0570 fax
(831) 633-3063 Education & Training
(831) 755-2313 Jobline

thehall@ibew234.org

www.ibew234.org
 ibew234
www.tricountyjatc.org

«field1» «field2» «field3»
«field4»
«field5»